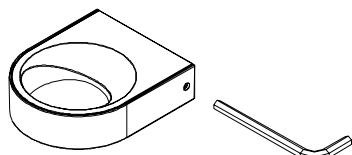
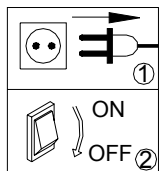


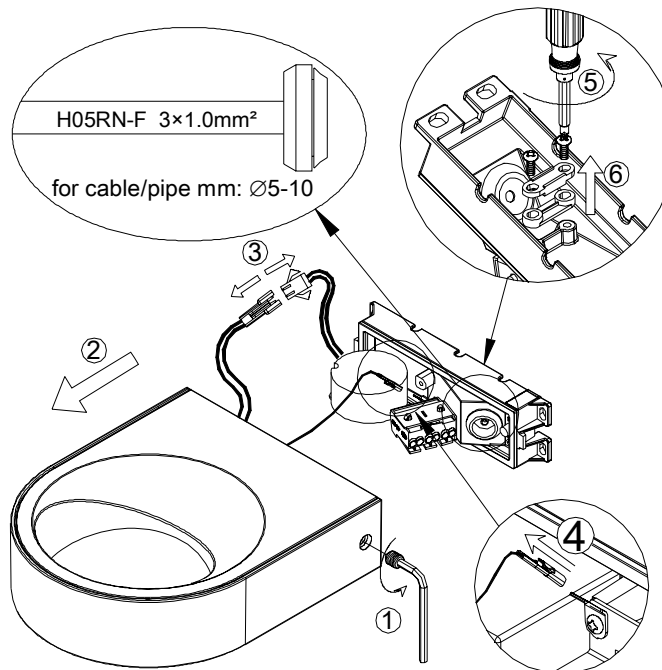
# 310006

If the external flexible cable or cord of this luminaire is damaged, it shall be exclusively replaced by the manufacturer or his service agent or a similar qualified person in order to avoid a hazard.

The light source of this luminaire is not replaceable; when the light source reaches its end of life the whole luminaire shall be replaced

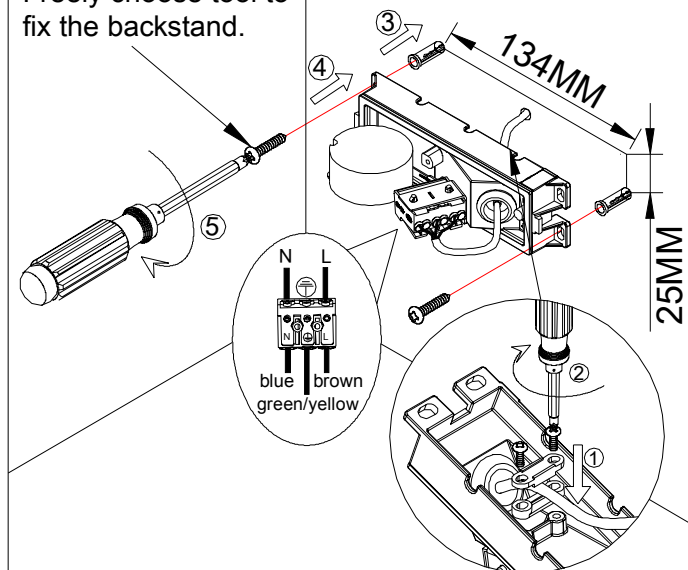


## FIG-1



## FIG-2-A Concrete

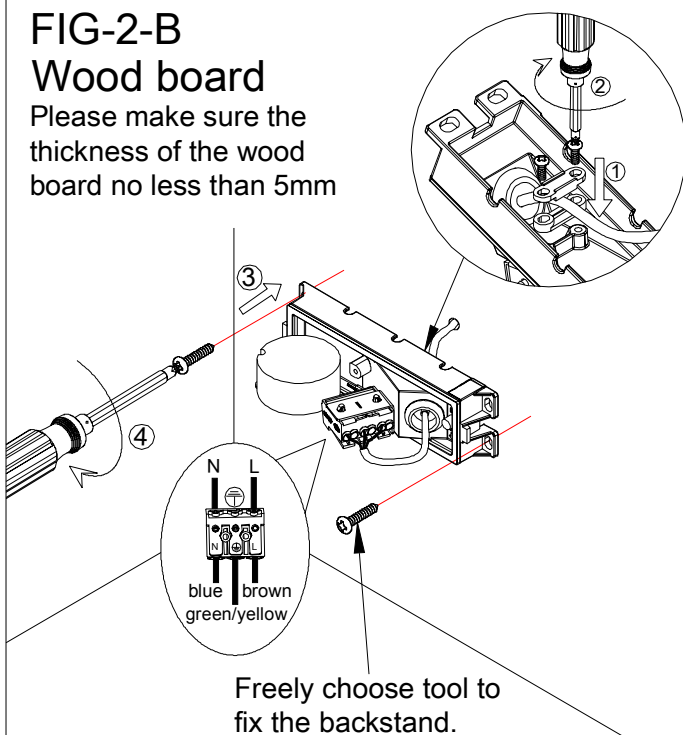
Freely choose tool to fix the backstand.



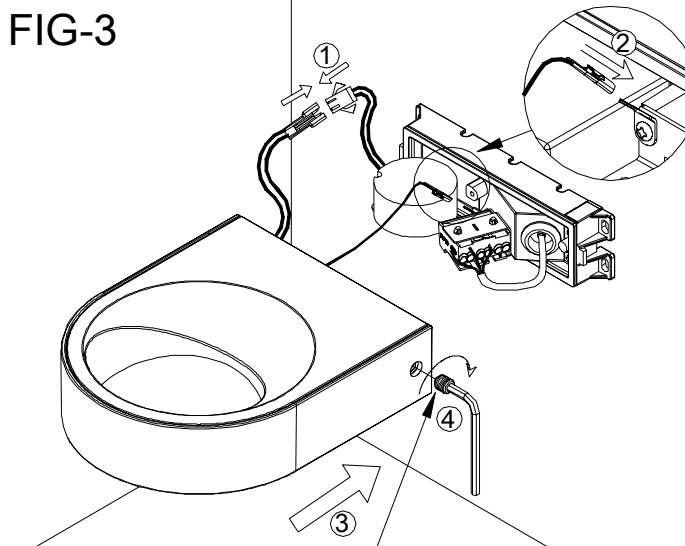
## FIG-2-B

### Wood board

Please make sure the thickness of the wood board no less than 5mm



## FIG-3



Before installation, please keep the base horizontal and make sure to install with following steps:  
Half lock one of the side screw first, full lock the other one, then go back to the first screw to full lock.

## FIG-4

